

**X-GSX4/8** GPRS Data Logger

**X-NSX4/8** Ethernet Data Logger

**X-GSN4/8** GPRS Ethernet Data Logger



## Functional Modules

### GPRS

Supports UDP and TCP over mobile network

### SMS

SMS Alarm to max. 8 mobile phones

SMS text user programmable

### Programmable I/O Channels

Each channel is programmable individually as:

- \* Analog, Pulse, Temperature/Humidity Sensor
- \* Digital Alarm Input, Modbus Meter Registers

### Optional:

#### \* 4G/3G/2G Modules

Worldwide, US, Europe, Asia mobile network

Optional 2G/3G/4G Modules

#### \* Ethernet

Supports UDP and TCP

Support TCP Modbus

#### \* Wi-Fi

Wi-Fi b/g/n

Supports UDP and TCP

#### \* Numeric LED

Four Digital Numerical LED display

Live Data Display of Four AD / Pulse Channels

### Free Bundled Software

- Premier Client Lite for Win10, iOS, Android
- TCP Modbus Tool
- OPC Server Driver

- 4MB Internal Data Logging Memory
- SD Memory Card Expansion Slot (max. 32GB)
- Data & Alarm via GPRS, SMS & Ethernet
- Mobile Phone SMS Alarm
- Programmable Data Upload Interval as fast as 5s
- Programmable Data Logging Interval
- Multi-I/O Channels: temperature, humidity, analog, digital, pulse channels or RS232/485 Modbus
- Digital Alarm Input & Relay Output
- Up to 11 temperature sensors
- Modbus Support via RS232/485
- Support Fixed IP and DDNS

209, Global Business Park, Nr. Safari Hotel,  
S.P. Ring Road, Odhav, Ahmedabad- 382415

**Tel :8866773323**

**[Tushar@xexagon.co.in](mailto:Tushar@xexagon.co.in)**

**[www.xexagon.co.in](http://www.xexagon.co.in)**

## X-GSX8-HV/MS

- × Programmable Data Upload Interval (5 seconds ~ 24 hours)
- × Programmable Data Logging Interval (1 min ~ 60 min)
- × Live data and history data over GPRS, SMS or Ethernet
- × Support both live data and packet data
- × Setup via USB, SMS, Network or over Internet via GPRS
- × Support Dynamic Domain Name or Fixed IP over GPRS
- × Support UDP f TCP protocol data transmission
- × Programmable ultra-highflowultra-low alert levels in each channel
- × Alarm SMS text message user programmable in each channel
- × 4MB Internal Memory storing 30000 records
- × SD Card memory expansion (max. 32GB)
- × Power Loss Alert, Internal UPS
- × Optional 4 Channel Numeric LED display



External 4-Channel Numeric Display  
 ■ analog channels  
 ■ temperature, humidity



### X-GSX8-HV

#### Programmable 11 Analog Channels

- ∅ 8 x Temperature Sensors
- ∅ 1 x Humidity Sensors
- ∅ 8 x Analog Sensors

#### Programmable 11 Digital Inputs

- ∅ Power Loss Resume
- ∅ 4 x Alarm Sensors
- ∅ 4 x Pulse Sensors

#### Output Channels

- ∅ 4 x Relay Outputs
- ∅ 2 x DC 5V Outputs
- ∅ Temperature Sensor Power

X-GSX8-HV is a data logger designed for temperature logging and remote monitoring. Its channels can be programmed as:

- “8 Digital Temperature Sensors + 3 Analog Temperature Sensors”,
- “5 Digital Temperature Sensors + 5 Analog Sensors”,
- “3 Digital Temperature Sensors + 8 Analog Sensors”,
- ... or other combinations.

#### Digital Temperature Sensors

- ∅ DSD18B20 logged with its unique serial number
- ∅ Good for calibration and validation certificate for each sensor
- ∅ All temperature readings will be uploaded in one data record

#### Alarm Delay Time

- ∅ Programmable delay time for each temperature channel
- ∅ Reduce false alarm generated by short period highflow temperature

### X-GSX8-MS

#### Programmable 11 Analog Channels

- ∅ 2 x Temperature Sensors
- ∅ 1 x Humidity Sensors
- ∅ 8 x Analog Sensors
- ∅ 8 x Modbus Data Registers

#### Programmable 11 Digital Inputs

- ∅ Power Loss Resume
- ∅ 10 x Alarm Sensors
- ∅ 4 x Pulse Sensors
- ∅ 8 x Modbus Data Registers

#### Output Channels

- ∅ 4 x Relay Outputs
- ∅ 2 x DC 5V Outputs
- ∅ Temperature Sensor Power

X-GSX8-MS is a data logger designed for Modbus meter remote monitoring. Its channels can be mapped to 16 data registers.

Modbus registers can be up to 8 floating points and 8 integers data, and compatible to ABB, Elster, Coruz meters via RS232/RS485 port.

#### Support Modbus protocol

- ∅ reads and logs Modbus meter data into memory
- ∅ uploads Modbus data via GPRS or Ethernet

#### User Defined Register Read Command

- ∅ Send Read command via RS485 f RS232
- ∅ Read data via RS485 f RS232 port

#### User Defined Register Address

- ∅ Programmable Modbus device address & data register address
- ∅ Data Type selectable

## X-GSX4-HV/MS

- \* Programmable Data Upload Interval (5 seconds ~ 24 hours)
- \* Programmable Data Logging Interval (1 min ~ 60 min)
- \* Live data and history data over GPRS, SMS or Ethernet
- \* Support both live data and packet data
- \* Setup via USB, SMS, Network or over Internet via GPRS
- \* Support Dynamic Domain Name or Fixed IP over GPRS
- \* Support UDP / TCP protocol data transmission
- \* Programmable ultra-high/high/low/ultra-low alert levels in each channel
- \* Alarm SMS text message user programmable in each channel
- \* 4MB Internal Memory storing 30000 records
- \* Power Loss Alert, Internal UPS
- \* Optional 4 Channel Numeric LED display



### X-GSX4-HV

#### Programmable 2 Analog Channels

- ◆ 4 x Temperature Sensors
- ◆ 1 x Humidity Sensors
- ◆ 2 x Analog Sensors

#### Programmable 3 Digital Inputs

- ◆ Power Loss/Resume
- ◆ 3 x Alarm Sensors
- ◆ 3 x Pulse Sensors

#### Output Channels

- ◆ 2 x Relay Outputs
- ◆ 1 x DC 5V Outputs
- ◆ Temperature Sensor Power

X-GSX4-HV is a data logger designed for temperature logging and remote monitoring. Its channels can be programmed as:

*"2 Digital Temperature Sensors + 2 Analog Temperature Sensors",*

*"3 Digital Temperature Sensors + 1 Analog Sensors",*

*"4 Digital Temperature Sensors", ... or other combinations.*

#### Digital Temperature Sensors

- ◆ DSD18B20 logged with its unique serial number
- ◆ Good for calibration and validation certificate for each sensor
- ◆ All temperature readings will be uploaded in one data record

#### Alarm Delay Time

- ◆ Programmable delay time for each temperature channel
- ◆ Reduce false alarm generated by short period high/low temperature

### X-GSX4-MS

#### Programmable 2 Analog Channels

- ◆ 1 x Temperature Sensors
- ◆ 1 x Humidity Sensors
- ◆ 2 x Analog Sensors
- ◆ 4 x Modbus Data Registers

#### Programmable 3 Digital Inputs

- ◆ Power Loss/Resume
- ◆ 3 x Alarm Sensors
- ◆ 3 x Pulse Sensors
- ◆ 4 x Modbus Data Registers

#### Output Channels

- ◆ 2 x Relay Outputs
- ◆ 1 x DC 5V Outputs
- ◆ Temperature Sensor Power

X-GSX4-MS is a data logger designed for Modbus meter remote monitoring. Its channels can be mapped to 8 data registers.

Modbus registers can be up to 4 floating points and 4 integers data, and compatible to ABB, Elster, Coruz meters via RS232/485 port.

#### Support Modbus protocol

- ◆ reads and logs Modbus meter data into memory
- ◆ uploads Modbus data via GPRS or Ethernet

#### User Defined Register Read Command

- ◆ Send Read command via RS485 / RS232
- ◆ Read data via RS485 / RS232 port

#### User Defined Register Address

- ◆ Programmable Modbus device address & data register address
- ◆ Data Type selectable

## Channels & Sensors

- \* X-GSX4 & X-GSX8 series support temperature, humidity sensors, and various sensors via numerous I/O.
- \* Digital Channels can be programmed as alarm, pulse sensors or Modbus integer registers.
- \* Analog Channels can be programmed as analog sensors, temperature or Modbus floating point registers.

### Power Rating

Power Input:	10~15VDC	
Power Rating:	Standby	~30mA
	Data Upload	~600mA

### Channels

<b>AD Channel:</b>	High Precision 12Bit AD converter
Signal Type:	4 ~ 20mA or 0 ~ 5VDC
Accuracy:	2.5/ 4096=0.00061 (0.061%)
Alert:	Programmable 1st high / low level Programmable 2nd high / low level
<b>Digital Input :</b>	Power Type or Dry contact
<b>Relay Output:</b>	Max. DC24V @3A, AC120V @3A
Logging Control	-turn on before logging -turn off after logging
Alarm Control	-turn on/off alarm triggered
<b>Pulse Input:</b>	Pulse Frequency, Max. 40 pulses /s

### Optional Digital Temperature Sensor

Sensor:	DS18B20
Range:	-55 ~ 125 ℃
Accuracy:	+/-0.5 ℃
Resolution:	12 bit (0.0625 ℃)
Housing:	steel housing
Power Input:	3.5~5.5VDC
Sensor Cable:	2 meter (max. 150m)



### Network

Protocol:	UDP or TCP
SMS, GPRS:	2G, 3G or 4G Module options
Ethernet:	RJ45 Port 100/100M

### Temperature & Humidity Sensor (optional)

Sensor:	DS18B20, CH1B
Range:	-55 ~ 125 ℃, 1 ~ 100% RH
Accuracy:	+/-0.5 ℃, +/-2.5% RH
Resolution:	12 bit (0.0625 ℃)
Housing:	PVC
Power Input:	3.5~5.5VDC
Sensor Cable:	2 meter (max. 150m)



### Optional Numeric LED Display

- \* 4 channels 4-digits LED display
- \* User selectable display channels
- \* Instant view of live data



### Optional Solar Power Kit



- \* Built-in Solar Panel Controller
- \* Direct connection to solar panel
- \* Internal 3Ah Li-ion Rechargeable Battery
- \* Automatic switch to battery power when losing sunlight
- \* Automatic recharge battery on sunlight
- \* IP67 Aluminum waterproof and crash proof enclosure
- \* Aluminum Casing, 280 x 199 x 90 mm
- \* Solar Panel is not included in package

Smart Data Logger provides "logging control" feature.

- \* It makes use of relay output to control the power on/off of sensors.
- \* It turns on the power source to sensor during logging, and off after logging.
- \* This feature lowers the power consumption especially in solar power pack.



X-GSX8-HV\_C, X-GSX8-MS\_C  
X-GSX4-HV\_C, X-GSX4-MS\_C



## Premier Client Lite for Windows, iOS, Android

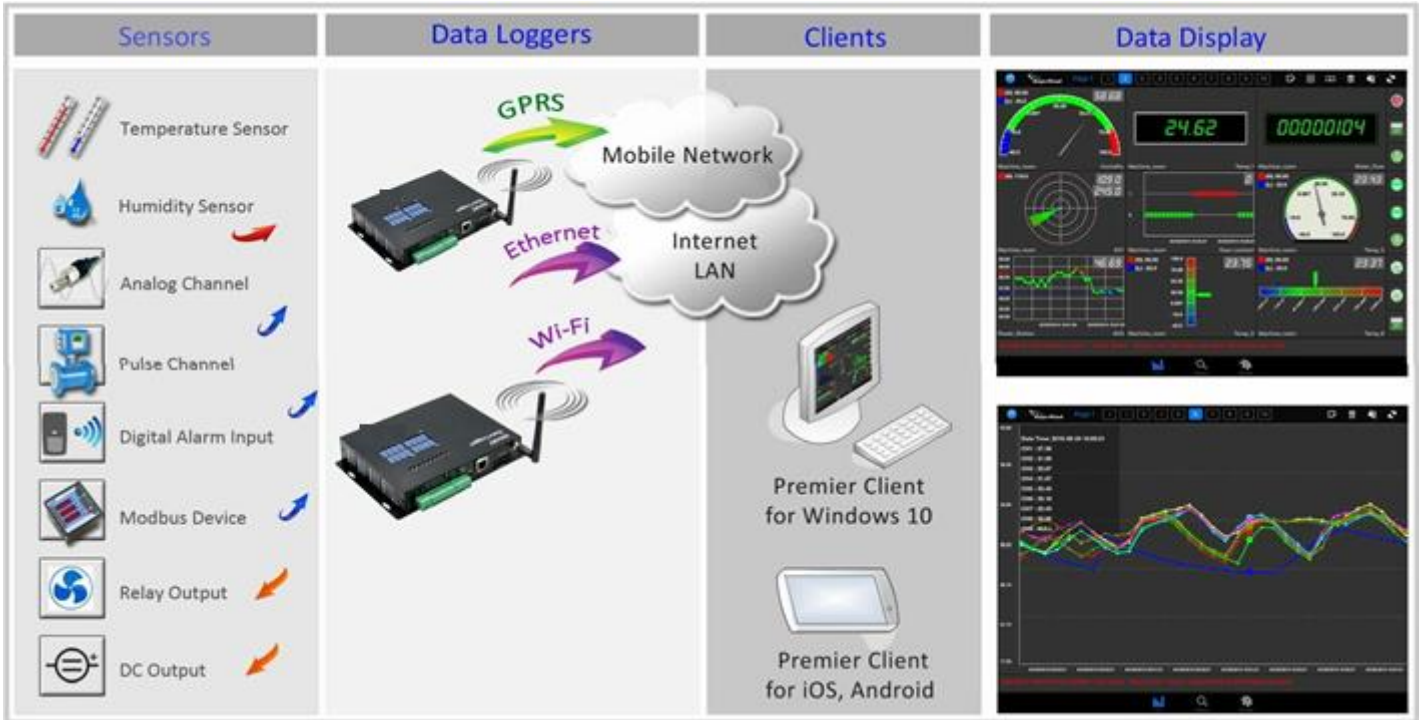
Premier Client Lite [Direct Mode] is bundled with each Data Logger.

It provides a tool of receiving live & historical data, and a user-friendly graphical display of data.

### Premier Client

for Windows 10, iPhone, iPad, Android Phone

[Download "Premier Client" Brochure](#)



### How "Premier Client Lite" works?



Data Logger logs and uploads live data via UDP or TCP over 4G and Ethernet Network.

"Premier Client Lite" is the Client Software [Direct Mode] receiving data from data loggers.

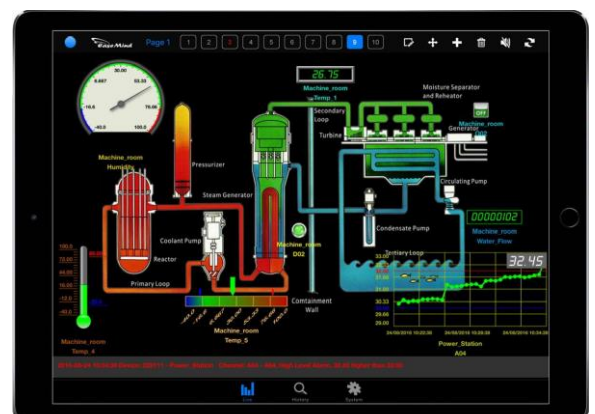
"Premier Client Lite for Windows, iPad & Android" supports:

- ◆ Live Data Display on
  1. Split Screen
  2. Line Charts
  3. HMI
  4. Dashboard
  5. Data Listing
  6. GPS Map
- ◆ Local Data Storage
- ◆ Historical Data Display
- ◆ User configurable alarm level of each channel
- ◆ On-screen alert in display and audio
- ◆ Max. 2 Data Loggers
- ◆ Alarm Email

*InsJan] Touch. Drop & Drag Operajon.*

*No more proprieJary display equipmen]!*

*Dirce] Access da]a from ]he da]a logger!*



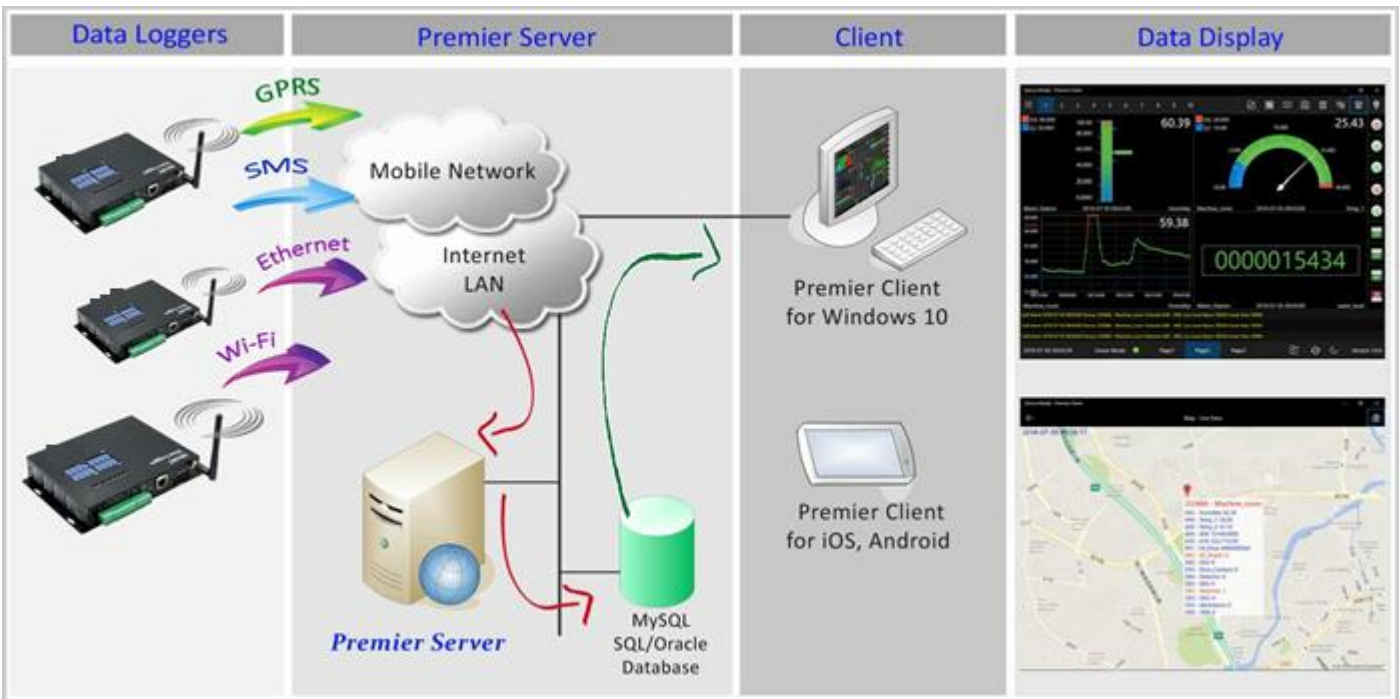
# Premier Serxer Client System

Premier Server provides the central management of data loggers, incoming data, database and remote users.  
Central management of data loggers, remote users and database.

## Premier X-GSX8 Serxer

- ◆ Receiving data via Internet, SMS, LAN & Wi-Fi
- ◆ Real time display of devices, server & clients status
- ◆ Alert users via alarm email or client software
- ◆ Devices & Remote User Grouping
- ◆ Central Management of Database in: MySQL / SQL / Oracle

Download "Premier X - GSX8 Server"



## Premier Client (Windows 10, iOS, Android)

- ◆ Retrieving live and historical data from Premier Server
- ◆ Real time monitoring of a number of data loggers
- ◆ Instant on-screen alerts when live data is beyond the alarm levels
- ◆ Data Analysis for each channel
- ◆ Live Alarm List and Email Alarm
- ◆ Independent Alarm Setting for each channel and remote user



**SPLIT**  
Meter & Chart View  
2x2, 3x3



**DATA LIST**  
Listing of  
devices and channels



**HMI**  
Human Machine  
Interface



**CHART**  
Comparison of  
channels & devices



**Dashboard**  
64 Channels  
Single Screen Display

## Communication Module Selection

	4G	GPRS, SMS	Ethernet	Wi-Fi	GPS
X-GSN8	-	✓	✓	-	-
X-GSX8	-	✓	-	-	-
X-GSN8-4G	✓	✓	✓	-	-
X-GSX8-4G	✓	✓	-	-	-
X-GSN8-4GP	✓	✓	✓	-	✓
X-GSX8-4GP	✓	✓	-	-	✓
X-NSX8	-	-	✓	-	-
X-GSX8-WF	-	-	-	✓	-

Model Selection	X-GSX8-HV	X-GSX8-MS	X-GSX4-HV	X-GSX4-MS
	High Performance		Economic	
Metal Enclosure	17 x 13 x 3 cm		13 x 11 x 3 cm	
Features	Multipoint	Modbus	Multipoint	Modbus
Power Input: 9 ~ 15VDC	✓	✓	✓	✓
Rechargeable Backup Battery	✓	✓	✓	✓
Power Loss Alert #	✓	✓	✓	✓
Built-in 5VDC output	✓	✓	✓	✓
AD Channel (AD)	11	11	4	4
* Analog Sensor	8	8	2	2
* Temperature Sensor	8	2	4	1
Digital Channel (DI)	4	10	3	3
* Pulse Sensor	4	4	3	3
* Alarm Sensor	4	10	3	3
Relay Output (DO) #	4	4	2	2
Internal Memory	4MB	4MB	4MB	4MB
SD Memory Card Slot	✓	✓	—	—
Modbus Device Support	—	16 data registers	—	8 data registers
Digital Temperature Sensor (max.)	8	2	4	1
Humidity Sensor	1	1	1	1



### X-GSX8-HV

- \* multiple temperature and humidity sensors

### X-GSX8-MS

- \* standard Modbus device interface
- \* multiple data registers and meters



Data Logging Interval	Programmable (1 ~ 60 minutes)
Data Upload Interval	Programmable (5s ~ 24 hours)
Data Upload	On Schedule / Manual Request / Alarm Triggered
Internal Data Record	Average 30000 records (4MB)
Alarm Trigger	Analog Level: Ultra-High/High/Low/Ultra-Low, Digital On/Off Alarm, Power Loss/Resume
Server Network Connection	Dynamic Domain Name [DDNS] & Fixed IP
Data Transmission	[X-GSX4/8: GPRS, SMS] * [X-GSN4/8: GPRS, SMS, Ethernet] * [X-NSX4/8: Ethernet]
Protocol	[Ethernet – UDP & TCP], [GPRS – UDP & TCP]
Central Server	Independent Server IP for GPRS & Ethernet Data
Modbus Device Port	RS485 & RS232
Alarm Data	GPRS / Ethernet / SMS
SMS Alarm Text	User programmable SMS alarm text to max. 8 mobile phones
Local Setup	via Ethernet or USB Port by PC Software
PC Communication Port	RJ45 10/100M Ethernet or USB Port
Remote Command	GPRS, SMS or Ethernet
Ethernet Module	RJ45 10/100M Port – Optional
Wi-Fi Module	Wi-Fi b/g/n – Optional
GSM Module	2G Quad Band [GSM 850/900/1800/1900MHz] MC55i – Standard
3G Module	3G Five Band Worldwide [UMTS 800/850/900/1900/2100MHz] –Optional
4G Module	LTE US, Europe, Worldwide – Optional
GPS Module	Optional
Bundled Software Free	Standard Edition
Setup Software	Ethernet Network, or USB Port
Client Software [Direct Mode]	Premier Client Lite [for Windows 10, iOS, Android]
Centre Software	Data Receiving & Saving in txt file, max. 99 data loggers [Windows 10]
TCP Modbus Tool	Support TCP Server mode in Modbus protocol
OPC Server Driver	Third Party OPC Server integration
Optional Software	Premier Server Client Software Package

## X-GSX8-MS-4GP

- 4G mobile network
- GPS built-in
- Multiple I/O

